

Hardwired for Adventure

TOURISM SQUAMISH

Set amidst some of the most spectacular scenery and mountain country in BC, Squamish has a lot more than just one or two 'sweet spots' for you to explore. Below are a few of the many amazing sights and natural attractions for you to get out and discover.

NATURAL WONDERS

The Stawamus Chief: Commonly referred to as 'The Chief', it dominates Squamish's skyline and attracts hikers, climbers and sightseers from around the globe. It is one of the largest granite monoliths in the world and is a significant spiritual site for the area's First Nations people. Located within Stawamus Chief Provincial Park, the Chief's towering granite dome and surrounding area offer a campground, hiking trails, climbing for all levels and simply stunning sightseeing from its 3 summits.

Shannon Falls Provincial Park: It's hard to miss spectacular Shannon Falls. Located just off Highway 99 as you approach the town from the south, the 335 metre falls is the third highest in British Columbia. Shannon Falls was also once owned by the Carling O'Keefe Brewery, who used the pure mountain water to brew their beer. Local First Nations legends say the falls were formed by a giant two-headed sea serpent slithering and twisting his powerful body up the mountainside.

Brackendale Eagles Provincial Park / Eagle Run Dyke: The Squamish area is world renowned for its wintering bald eagle population. The eagles arrive in mid November and stay until March, with the largest concentration in late December to January. The park preserves critical habitat for these ravenous raptors as they congregate along the Squamish and Cheakamus Rivers to feed on spawning salmon. There are several excellent viewing areas however the Eagle Run Viewing Shelter along the Squamish River Dyke has volunteer interpreters on select weekends and year-round informational kiosks to add value to your experience.

Garibaldi Provincial Park: Located 13 kilometres northeast of Squamish, the park offers some of Canada's most accessible hiking, backcountry skiing, snowshoeing and alpine experiences. Excursions in Garibaldi Provincial Park can range from a few hours to a few days. The Diamond Head/Effin Lakes area near Squamish is in the southwestern portion of the 194,650-hectare park and is an excellent way to get off the beaten track and into spectacular alpine terrain.

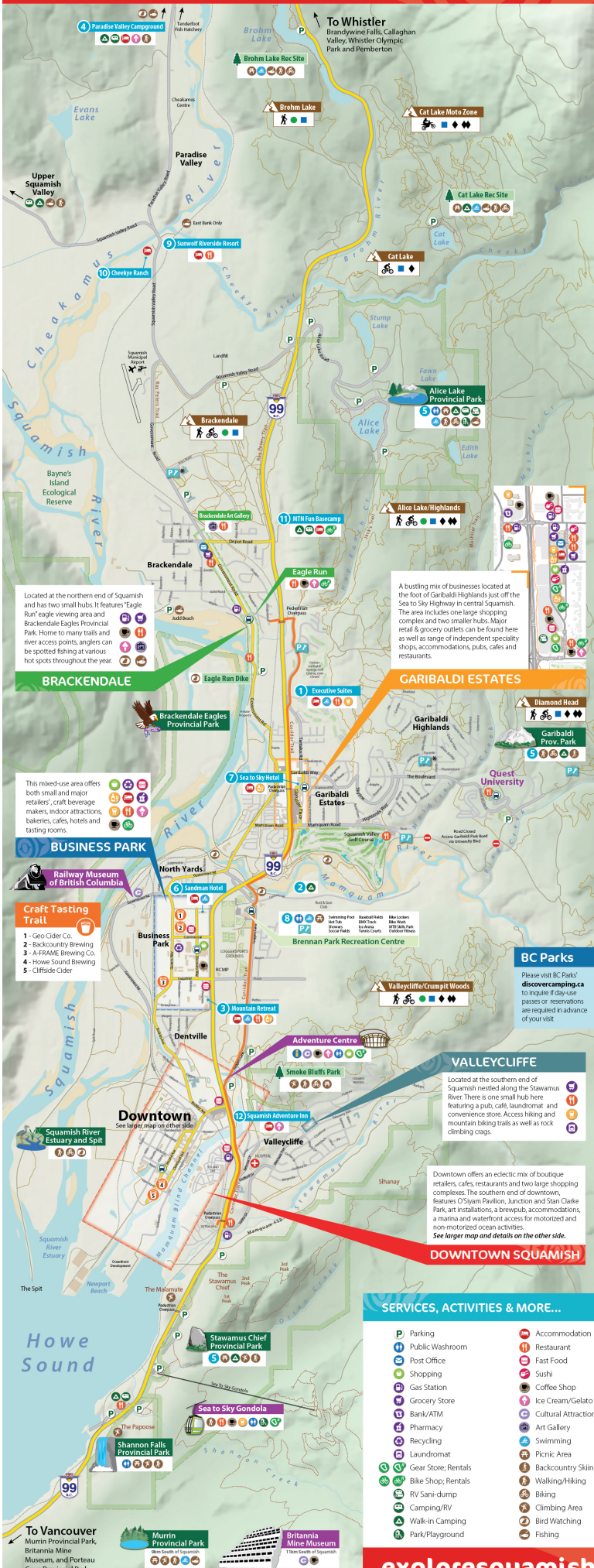
Alice Lake Provincial Park: Just five minutes north of Squamish you'll find an incredible variety of hiking, snowshoeing and walking trails, lakes, beaches and camping at Alice Lake Provincial Park. Alice Lake Park features four gorgeous lakes for your swimming, fishing or paddling pleasure. Alice Lake, the largest of the four, is most suitable for a family day at the beach, with toilet and shower facilities, a dock, boat launch site and several picnic areas. The park also features many superb single-track mountain bike trails that take you beyond the park boundaries. During the summer months, Alice Lake's campground is one of the most popular in the area, so be sure to make your reservations in advance.

The Squamish Estuary and Spit: The Squamish Estuary is a unique eco-system that includes tidal canals with mud flats at low tide and a channel that flows through wetlands, the perfect environment for young salmon preparing for their ocean journey. The Estuary is also home to thousands of ducks and geese, as well as more than 200 species of birds such as osprey and hawk.

ACCOMMODATIONS & CAMPGROUNDS

- Executive Suites Hotel & Resort**
40900 Tantalus Road, executivesuitessquamish.com
- Mamquam River Campground**
2023 Centennial Way, mamquamrivercampground.ca
- Mountain Retreat Hotel & Suites**
38922 Progress Way, squamishmountainretreathotel.com
- Paradise Valley Campground**
3520 Paradise Valley Road, paradisvalleycampground.net
- Provincial Park Campgrounds**
Alice Lake, Porteau Cove and Stawamus Chief Provincial Parks, discovercamping.ca
- Sandman Hotel & Suites**
39400 Discovery Way, sandmanhotels.com
- Sea to Sky Hotel**
40330 Tantalus Road, seatoskyhotel.com
- Squamish Municipal Campground**
39275 Loggers Lane, squamish.ca
- Sunwolf Riverside Resort**
70002 Squamish Valley Road, sunwolf.net
- Cheeky Ranch**
60001 Squamish Valley Road, cheekyranch.com
- MTN Fun Basecamp**
1796 Depot Road, mountainfunbasecamp.com
- Squamish Adventure Inn**
38220 Hwy 99, squamishstotel.com

For information call (local): **604.815.4994** or visit: exploresquamish.com



Located at the northern end of Squamish and has two small hubs. It features 'Eagle Run' eagle viewing area and Brackendale Eagles Provincial Park. Home to many trails and river access points, anglers can be spotted fishing at various hot spots throughout the year.

This mixed-use area offers both small and major retailers', craft beverage makers, indoor attractions, bakeries, cafes, hotels and tasting rooms.

- BUSINESS PARK**
- Railway Museum of British Columbia**
 - Craft Tasting Trail**
 - Geo Cider Co.
 - Backcountry Brewing
 - A-FAIRIE Brewing Co.
 - Howe Sound Brewing
 - Cliffside Cider

A bustling mix of businesses located at the foot of Garibaldi Highlands just off the Sea to Sky Highway in central Squamish. The area includes one large shopping complex and two smaller hubs. Major retail & grocery outlets can be found here as well as range of independent specialty shops, accommodations, pubs, cafes and restaurants.

Located at the southern end of Squamish nestled along the Stawamus River. There is one small hub here featuring a pub, cafe, laundromat and convenience store. Access hiking and mountain biking trails as well as rock climbing crags.

Downtown offers an eclectic mix of boutique retailers, cafes, restaurants and two large shopping complexes. The southern end of downtown features O'Spinn Pavilion, Junction and San Clark Park, art installations, a brewpub, accommodations, a marina and waterfront access for motorized and non-motorized ocean activities. See larger map and details on the other side.

- ### SERVICES, ACTIVITIES & MORE...
- Parking
 - Public Washroom
 - Post Office
 - Shopping
 - Gas Station
 - Grocery Store
 - Bank/ATM
 - Pharmacy
 - Recycling
 - Laundromat
 - Gear Store; Rentals
 - Bike Shop; Rentals
 - RV Sani-dump
 - Camping/RV
 - Walk-in Camping
 - Park/Playground
 - Accommodation
 - Restaurant
 - Fast Food
 - Sushi
 - Coffee Shop
 - Ice Cream/Gelato
 - Cultural Attraction
 - Art Gallery
 - Swimming
 - Picnic Area
 - Backcountry Skiing
 - Walking/Hiking
 - Biking
 - Climbing Area
 - Bird Watching
 - Fishing
 - Brewery/Cider/Distillery
 - Liquor Store
 - Bar/Pub
 - Commercial/Main Roads
 - Paved/Gravel Roads
 - Corridor Trail
 - Hiking Trail
 - Multi-Use Trail
 - Railway
 - Transit Hub

- 1 Kilometre / 1 Mile
- Adventure Hub** - Preferred staging for trail users. Adventure Hub amenities include parking*, tools, bike wash, and outhouses.
 - *Parking at schools is not permitted during school hours.
 - Trail Zones - Hiking, MTB, Moto**
 - Green: Easier
 - Yellow: More Difficult
 - Orange: Very Difficult
 - Red: Extreme Difficulty